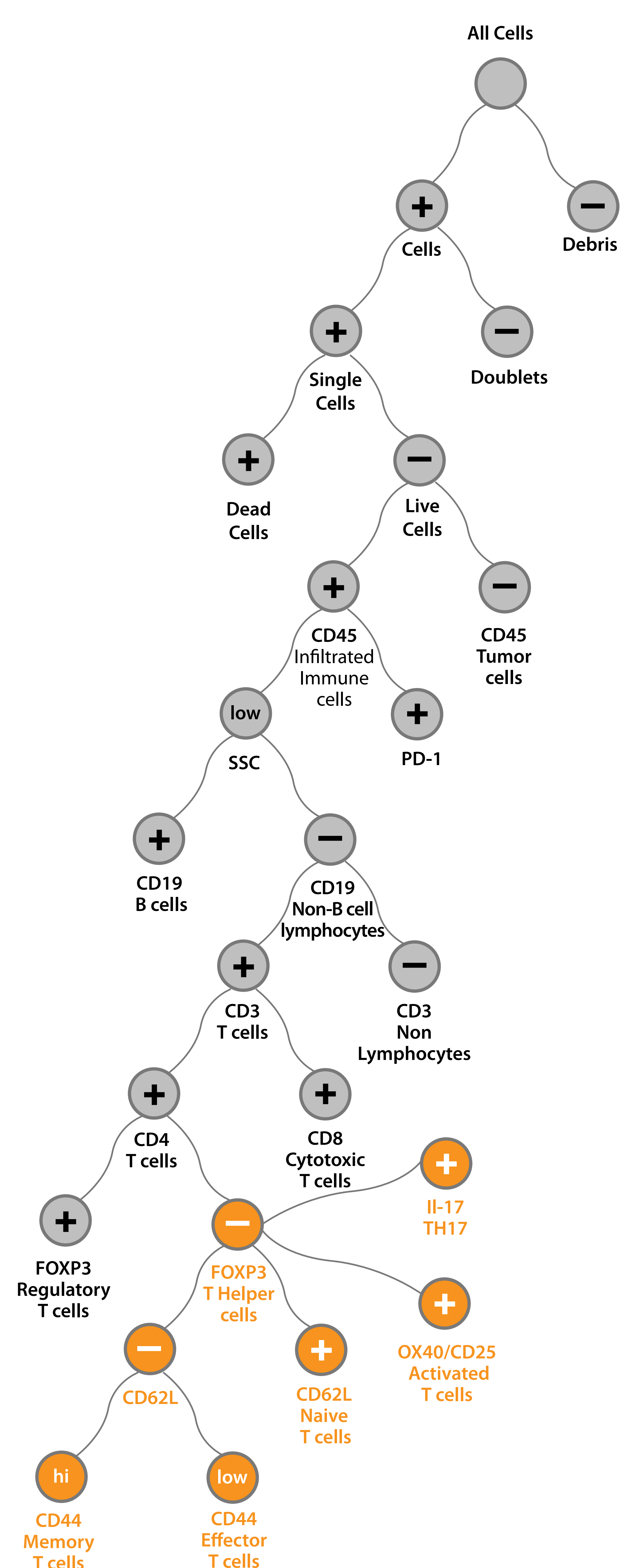
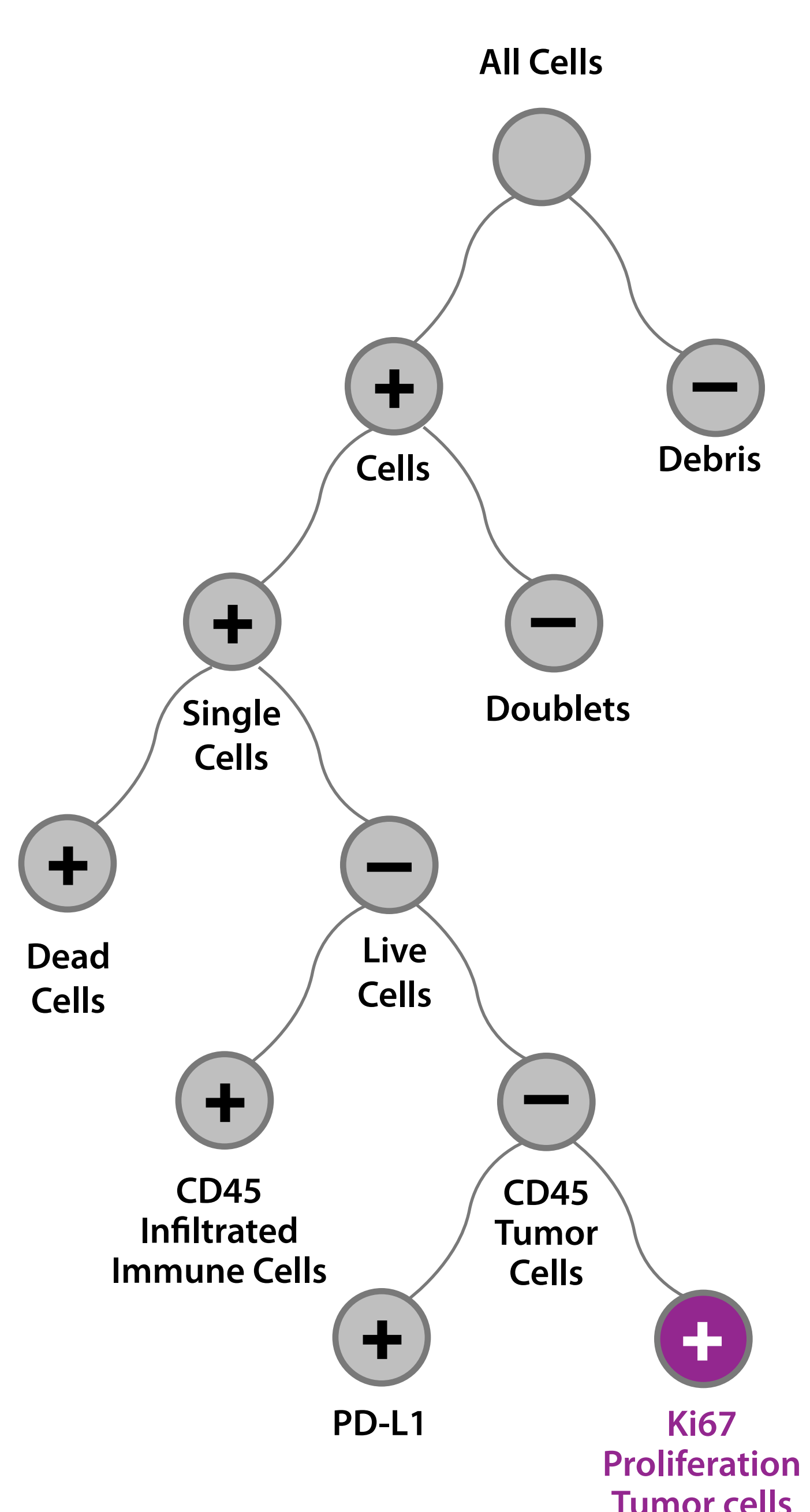


A.

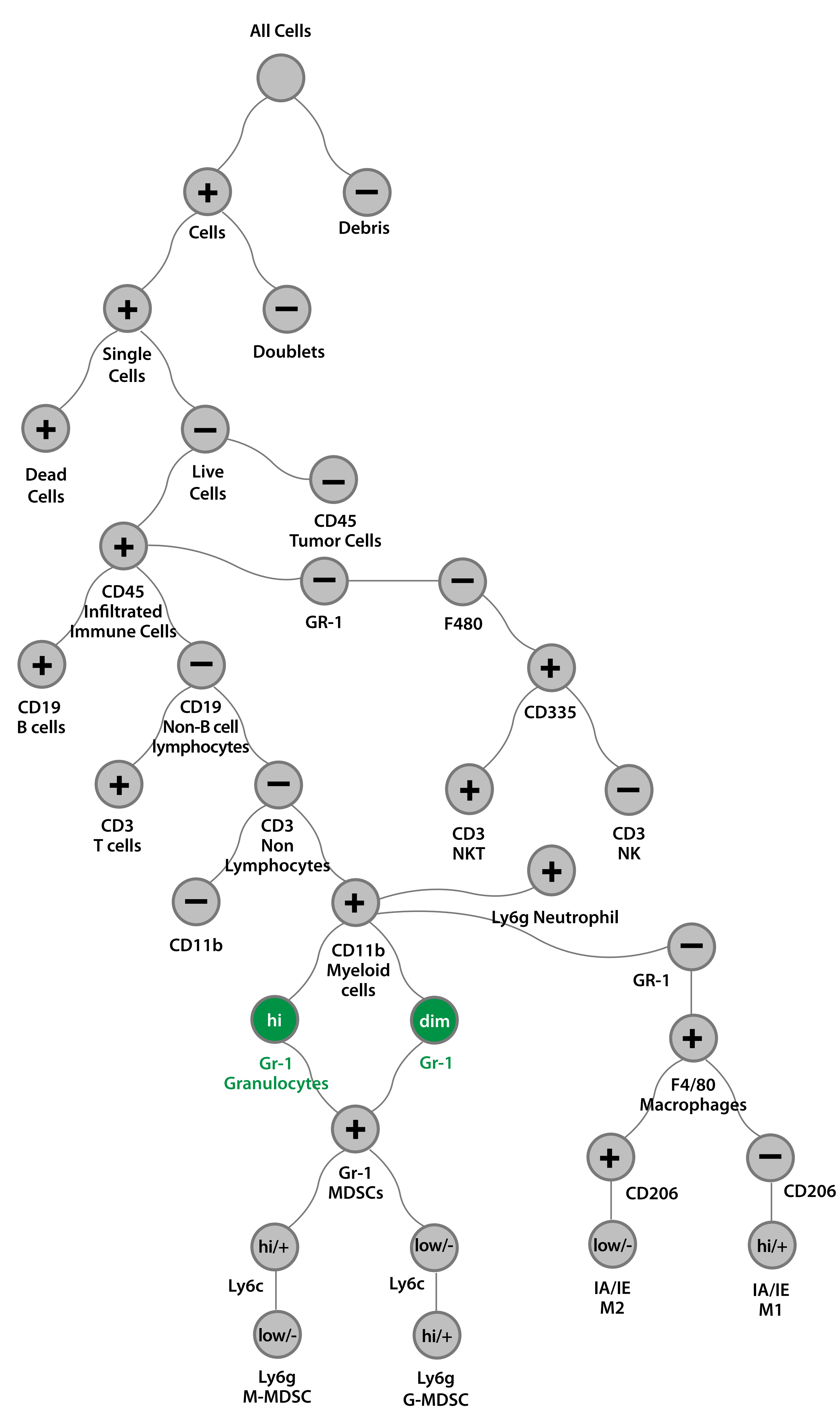
Lymphocytes



Tumor Cells

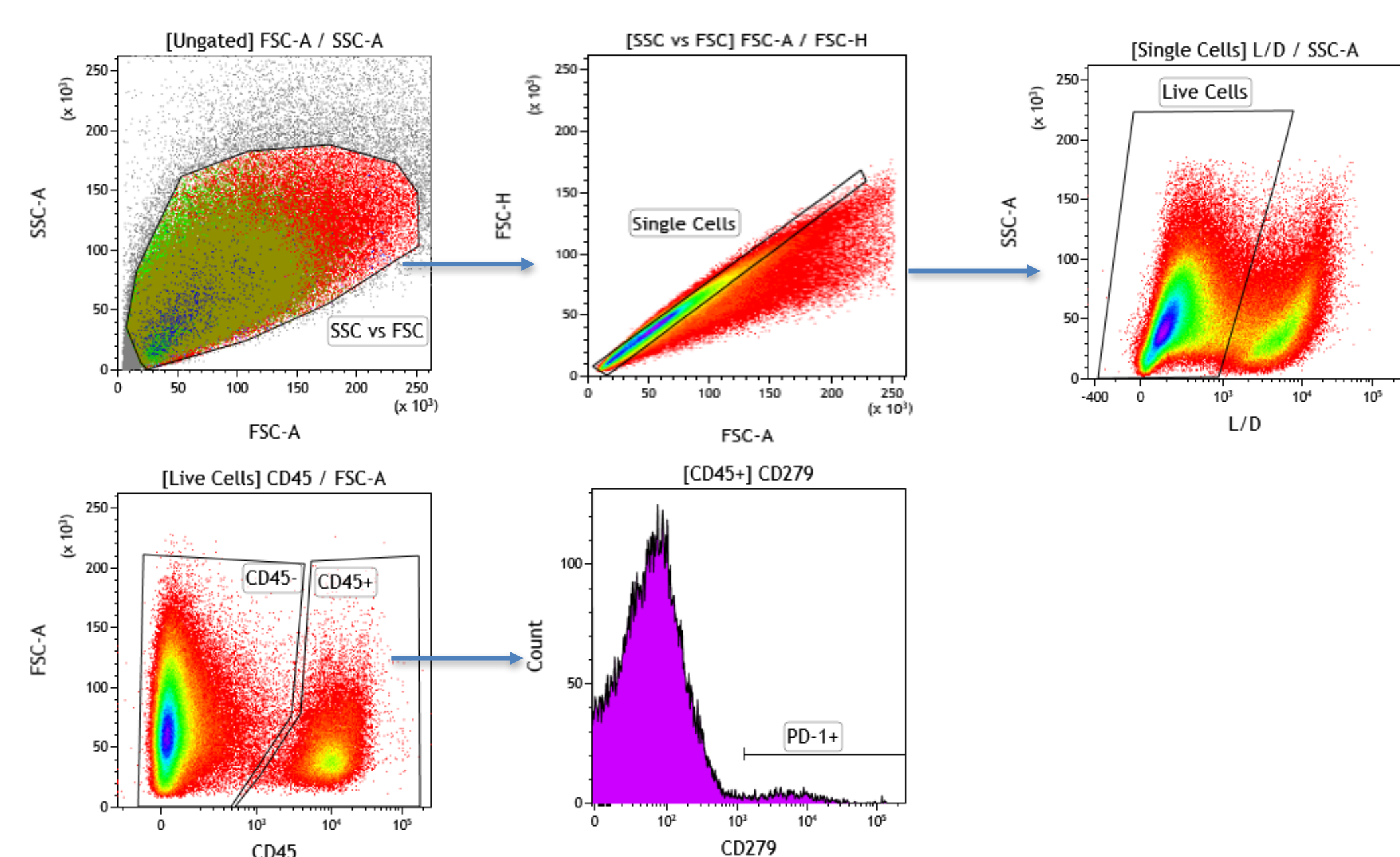


Myeloid + NK+NKT

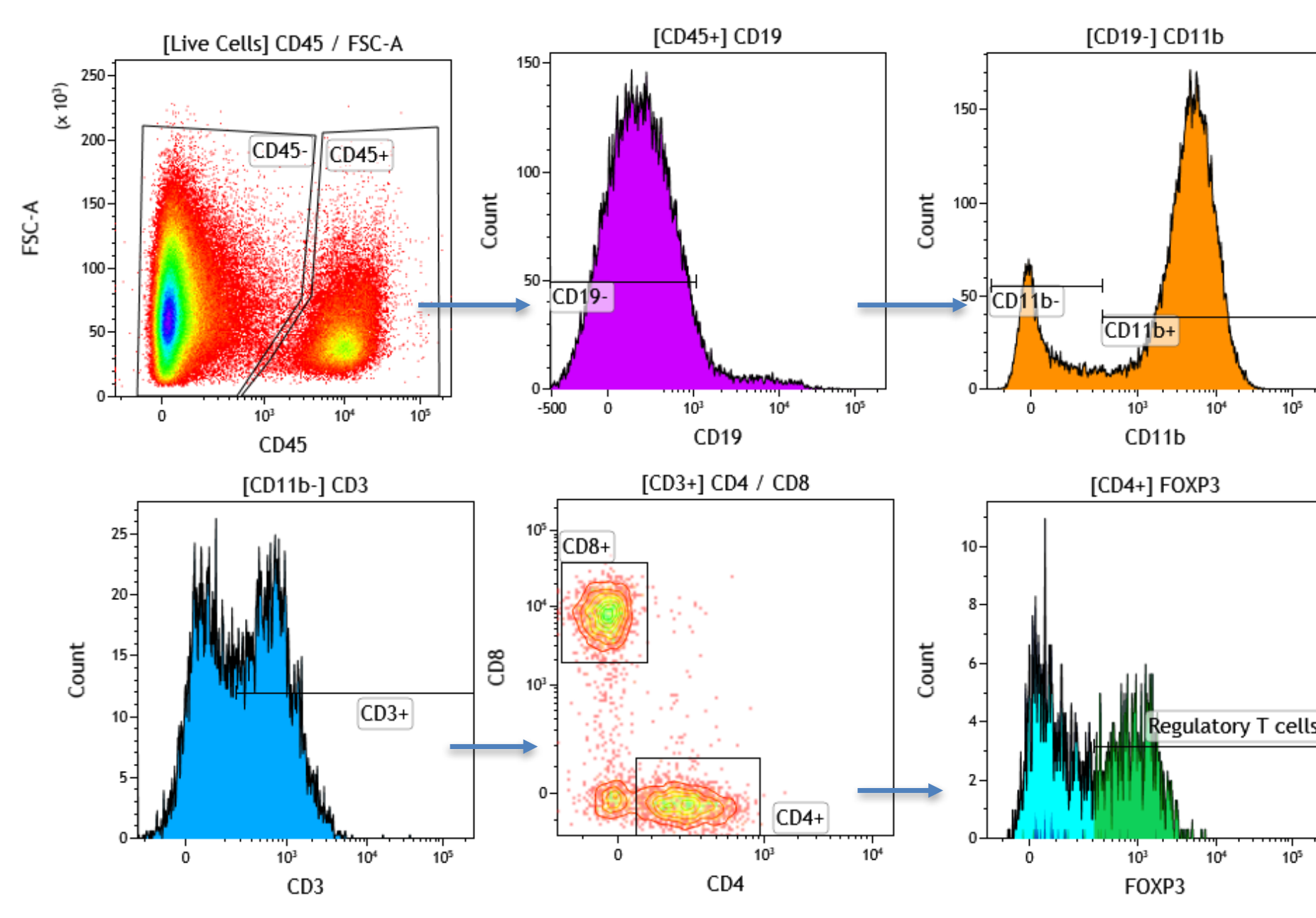


B.

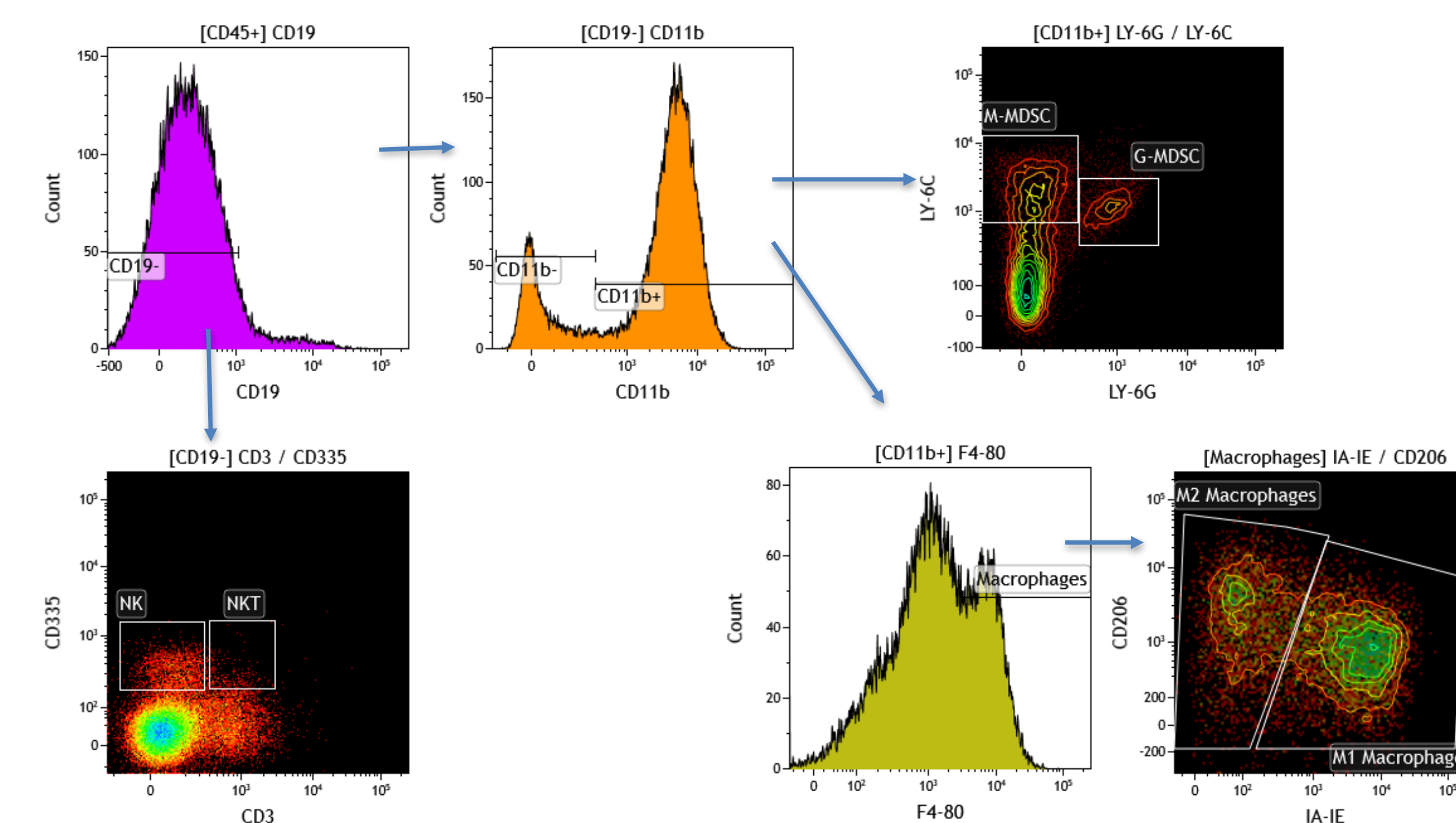
Gating Strategy



Lymphoid Gating

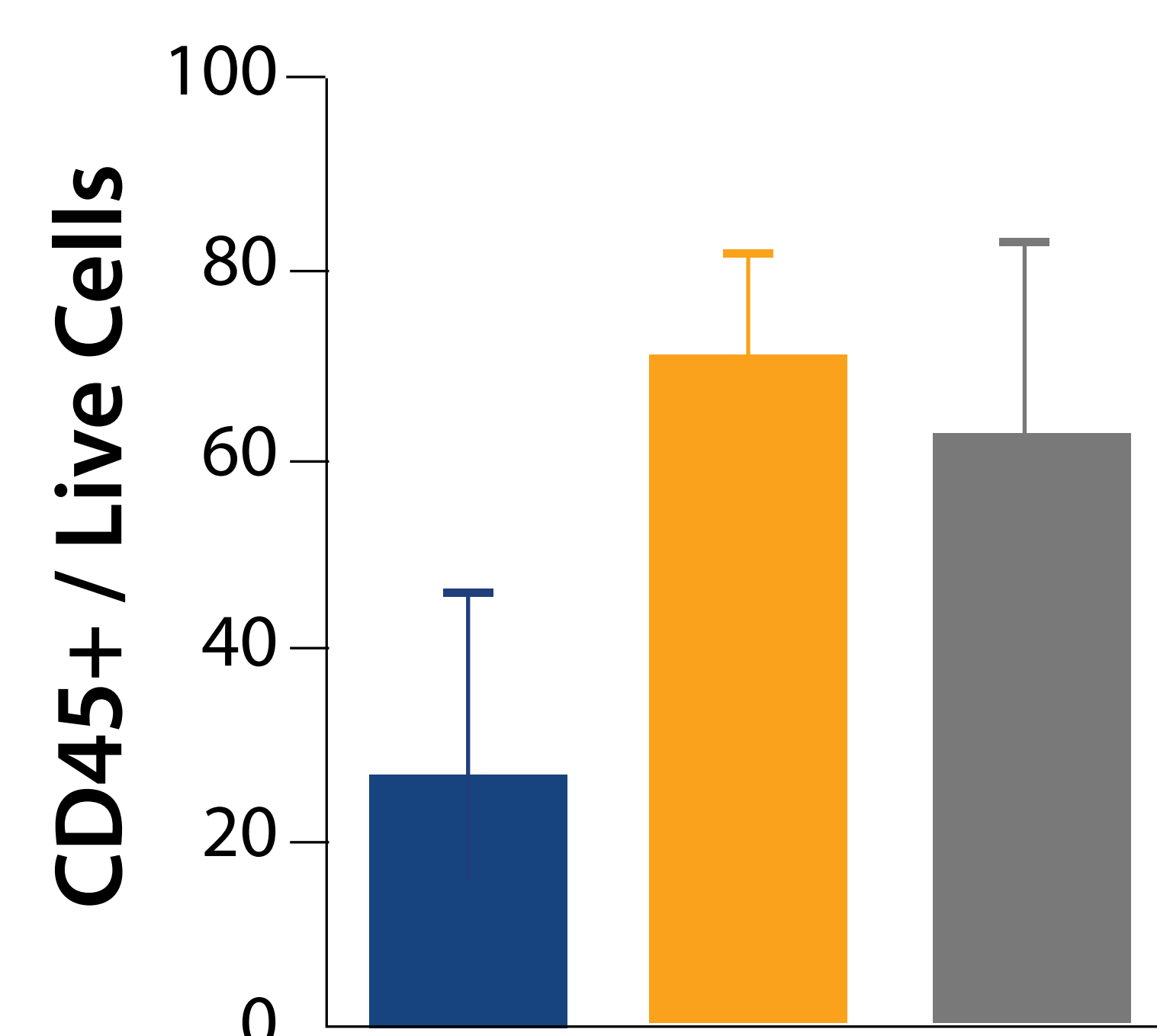


Myeloid Gating

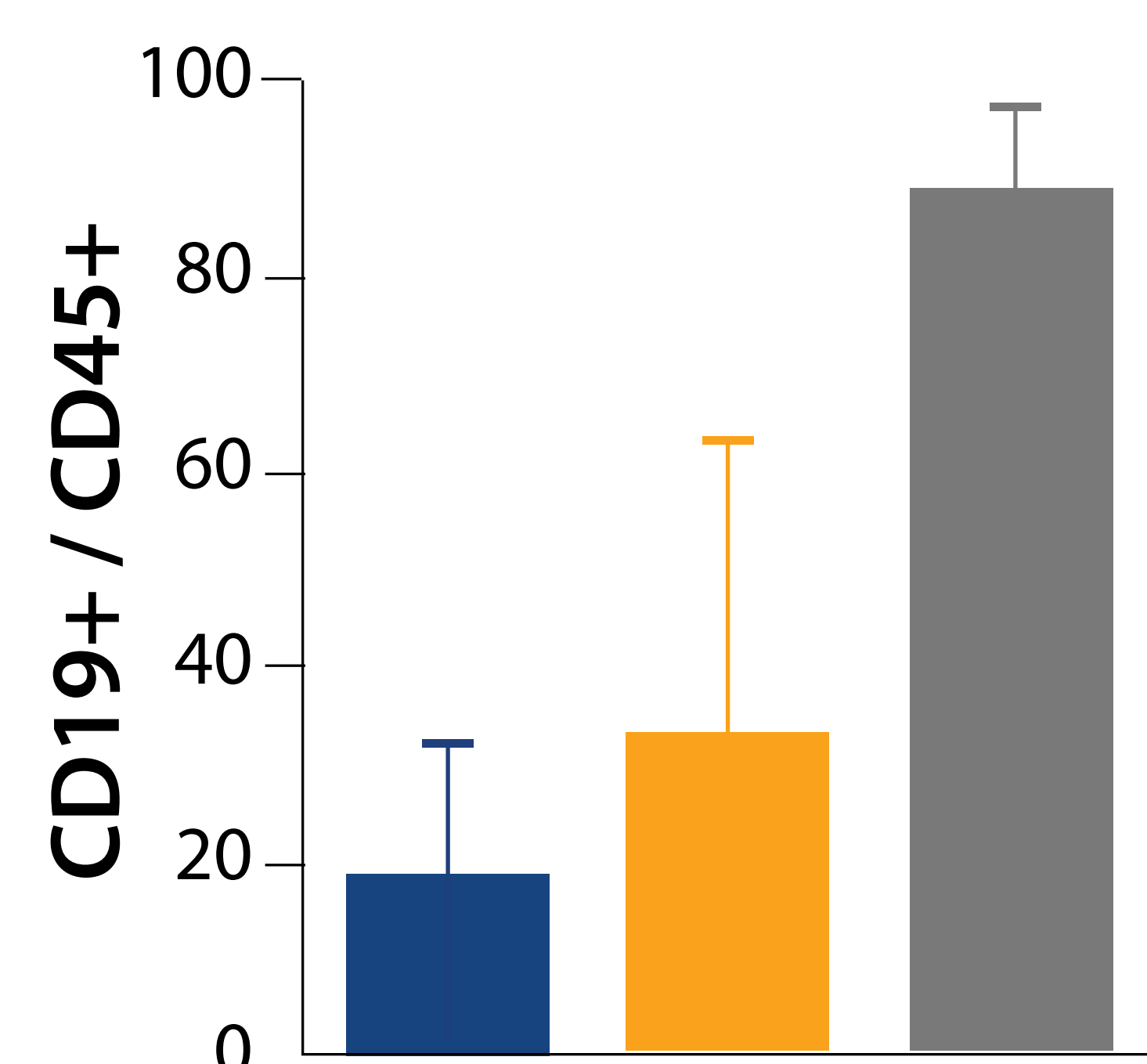


C.

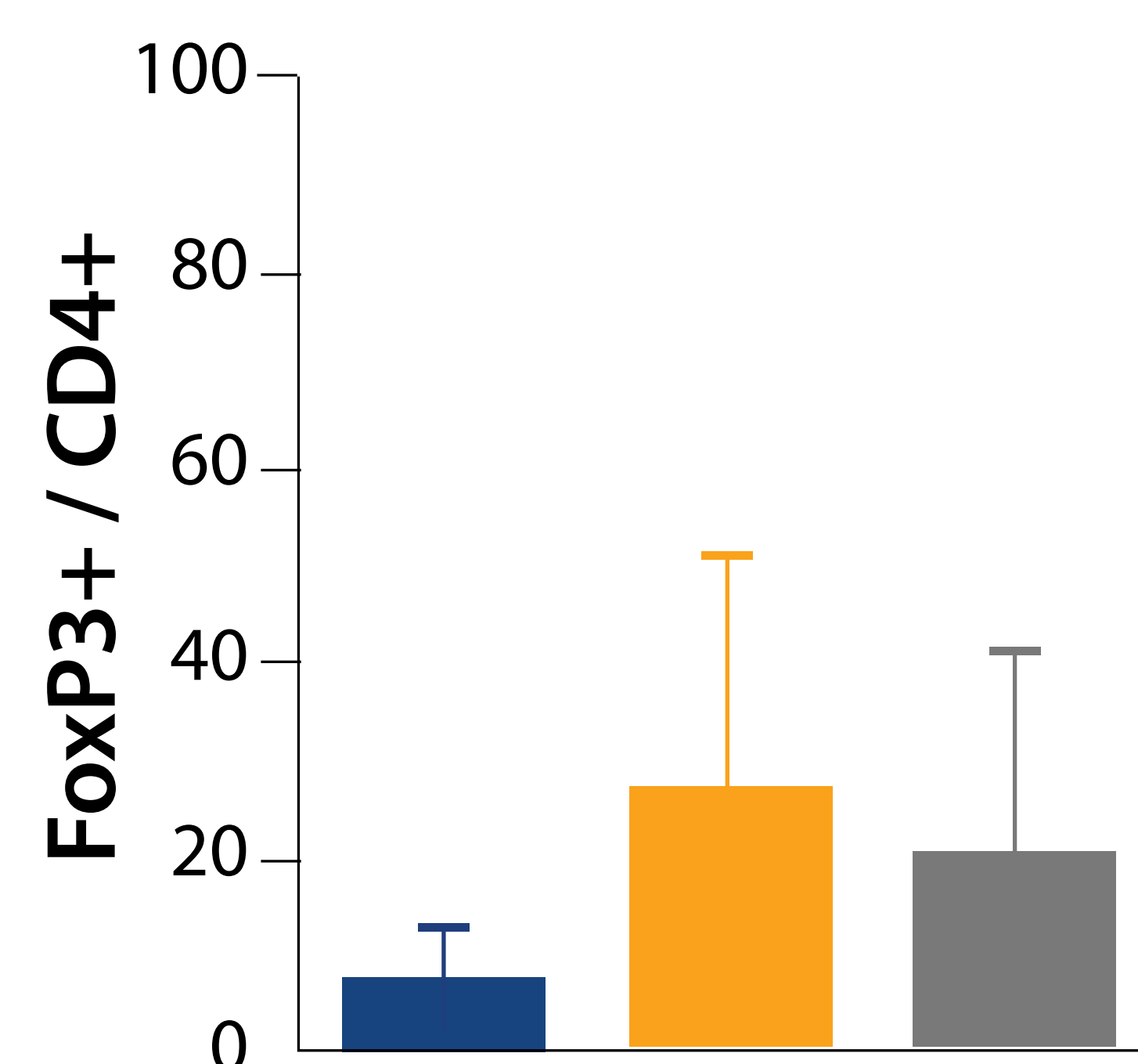
Total Leukocytes



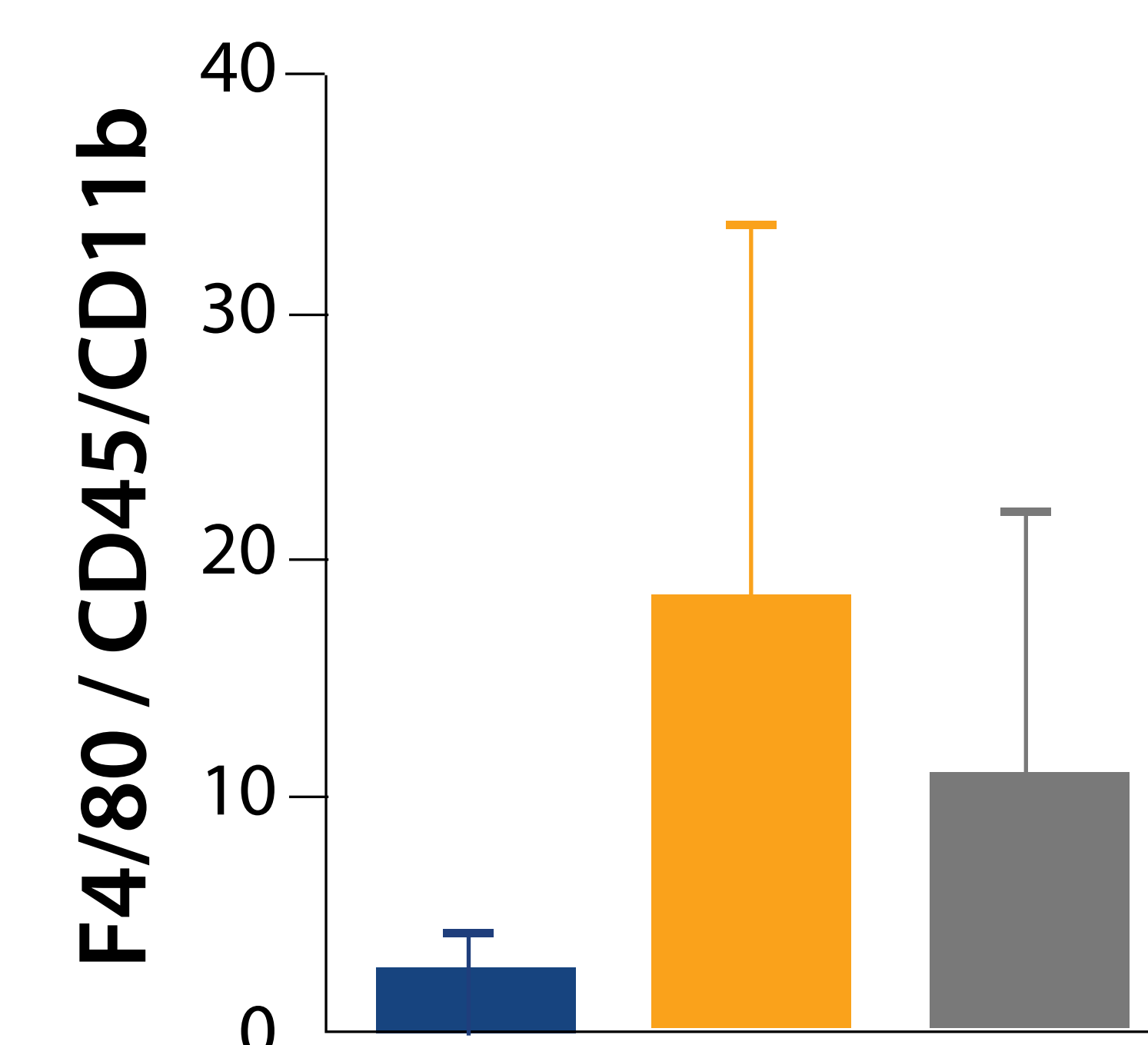
B Cells



Treg Cells



Macrophage



■ Mouse healthy pancreas ■ Subcutaneous tumor ■ Orthotopic tumor